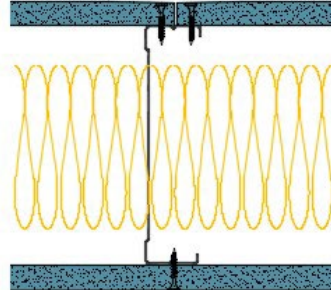


146-K-54(100) - SPEEDLINE System Data Sheet - Version V1 (24-10-23)

SPEEDLINE 146mm 'C' Stud Partition @600mm
Ctrs, with Knauf 15mm Soundshield Plus each side,
100mm APR



System Performance Breakdown

Fire Resistance:

BS476 Part 22:1987:

Test Ref & Date or Applied Ref & Report:

Max Height:

Thickness:

Duty Grade: BS 5234: Part 2:1992:

Sound Insulation:

60/60 Minutes (Integrity/Insulation).

BRE 285458 - BRE Report P102396-1011B

Refer to Speedline Specification Clause

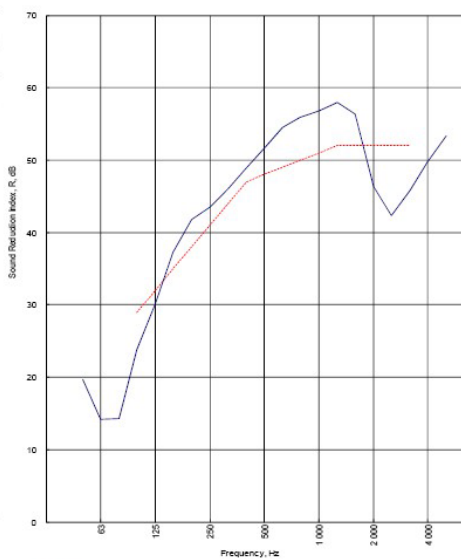
178 mm. (At Base Track, Excluding Finishes)

Severe - Annexes A-F

48 R_w dB, Date Tested or Assessed Against - 92-K-54(100)

Test Code:
H18648AA
Test Date:
31/03/2014

Freq. Hz	R dB
50	19.7
63	14.2
80	14.3
100	23.8
125	30.2
160	37.3
200	41.8
250	43.5
315	46.0
400	48.9
500	51.6
630	54.5
800	55.9
1 000	56.8
1 250	58.0
1 600	56.4
2 000	46.3
2 500	42.3
3 150	45.8
4 000	49.8
5 000	53.3



Rating according to BS EN ISO 717-1:2013 **R_w (C;Ctr) = 48 (-2;-6) dB**
Max dev. 9.7 dB at 2 500 Hz

Evaluation based on laboratory measurement results obtained by an engineering method:

$C_{90-3150}$ = -5 dB	$C_{90-5000}$ = -5 dB	$C_{100-5000}$ = -1 dB
$C_{0-50-3150}$ = -16 dB	$C_{0-50-5000}$ = -16 dB	$C_{0-100-5000}$ = -6 dB

TESTED AT ONE OF THE UKAS ACCREDITED LABORATORIES BELOW

B.T.C
(H-Ref on Graph)



B.R.E



AIRO



S.R.L



Customer: Metsec plc Hepsec Division

BTC 18648A: Page 8 of 11



SPEEDLINE Drywall Systems, Adsetts House, 16 Europa View, Sheffield Business Park, Sheffield, S9 1XH.

Tel: 0114 231 8030.

Email: enquiries@speedlinedrywall.co.uk

(As per the requirements set out in ISO/IEC 17025:2017 regarding test data the results stated have been carried out by voestalpine Metsec plc as part of the contract to supply Speedline Metal Sections to SIG Plc)